

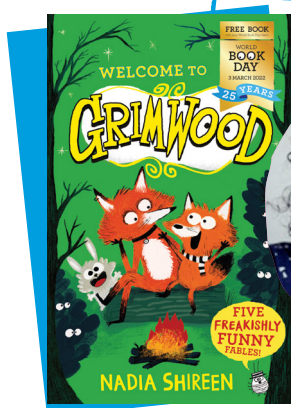
# ★ £1 BOOK ★ INFORMATION SHEET

## GRIMWOOD: FIVE FREAKISHLY FUNNY FABLES!

WRITTEN AND ILLUSTRATED BY: Nadia Shireen

PUBLISHER: Simon & Schuster

Early



### ABOUT THE AUTHOR:

Nadia Shireen has written and illustrated several much-loved picture books, including UKLA award-winning *Good Little Wolf*, and her latest, *Barbara Throws a Wobbler*.

Nadia has been shortlisted for the Roald Dahl Funny Prize and the Waterstones Children's Book Prize. *Grimwood*, for readers age 7+, is Nadia's first series for older readers.

### ABOUT THE BOOK:

Welcome to Grimwood! Join the residents of the woods where anything can happen, as they tell stories around the campfire. You'll hear weird and wonderful tales from Titus the stag, mayor of Grimwood, Nancy the fox with attitude, Willow the excitable rabbit, Frank the no-nonsense owl, and Ingrid the movie-star duck. Expect the unexpected, and be warned: you may laugh your head off . . .

## OUR FRIENDS AT CORAM BEANSTALK HAVE CREATED CONVERSATION STARTERS AND GAMES TO HELP YOU GET INTO THE WORLD OF THE BOOKS:

### A CONVERSATION STARTER AND A GAME

**CONVERSATION STARTER** "Ted. A cute little fox from the Big City who thinks everything in Grimwood is amazing. He likes theatre, smelling flowers and everything being great." If you wanted to give strangers an idea of the kind of person you are using just 3 examples of what you like, what would they be?

### GAME: NATURAL OR NOT. 2+ PLAYERS.

You will need a pen and paper to play this game. Decide whether you will try to come up with 'natural' or with man-made things you might see in a wood. You can always have a second round where you try the other one.

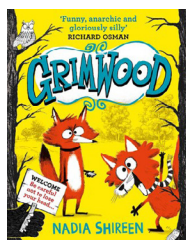
Try to come up with something you might **expect** to see in a wood for each letter of the alphabet. E.g. for the letter R, rabbit holes = natural & rubbish bins = man-made. Decide how long you are going to give yourselves to have a go at getting something for all 26 letters!

Score one point each if you gave the same answer as each other/someone else. Score two points if you gave an answer that no one else gave... as long as the other player(s) accept(s) that it is something you could reasonably expect to see in a wood... e.g. Ru Paul might well visit woods occasionally but it's not reasonable to expect to see him/her.

### AN ACTIVITY TO TRY

Sketch yourself as the woodland animal you think you'd be.

If you  
liked  
this then  
try...



Author: Nadia Shireen  
Illustrator: Nadia Shireen  
Publisher: Simon & Schuster 2021



Author: Jamie Smart  
Publisher: David Fickling  
2020



Author: Francesca Simon  
Illustrator: Steve May  
Publisher: Faber and Faber 2021