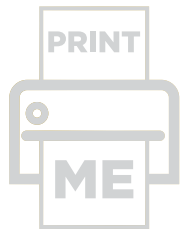


HANNAH GOLD

BUILD YOUR OWN BEAR MASK



INSTRUCTIONS FOR PRINTED MASK

BUILDING INSTRUCTIONS

- 1) Ask an adult to help you carefully cut out parts A/B/C/D/E along the solid dark grey line. You'll find this template on the following pages.
- 2) Fold along all of the light grey dashed lines in the direction indicated in the diagram below.
- 3) Find all of the small numbers on the tabs and edges of the individual parts of the mask.
- 4) Apply glue to the tabs and press firmly underneath the matching number, making sure the edges are aligned.
- 5) Fold parts D and E and stick to the top of the mask to make the ears.
- 6) Once your mask is complete, you could cut a band of cardboard from your cereal packet to fit around the back of your head and glue to the sides of the mask or attach a length of string or ribbon.

YOU WILL NEED

- A cereal box or sheets of thick paper
- A pair of safety scissors
- A pencil
- A ruler
- Glue or sticky tap
- String (if you have some)

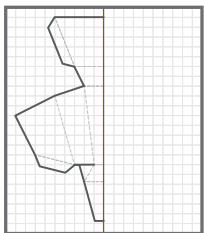
DECORATING INSTRUCTIONS

- 1) If you want to draw, colour or paint your mask, it will be easier to do whilst the mask is flat.

This line shows
a Mountain fold
(folds towards you)



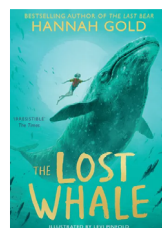
This line shows a Valley fold
(folds away from you)

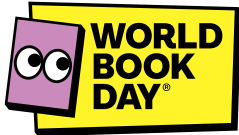


CAN YOU CREATE YOUR OWN ANIMAL MASK?

Try placing the ears on top of the mask to turn the Bear into the Husky – or even try to create your own animal mask using the blank grid
(HINT: you can design one half of the mask first to see if all of the pieces fit, then copy the design onto the second half of the grid).

DISCOVER MORE FROM
HANNAH GOLD





HANNAH GOLD

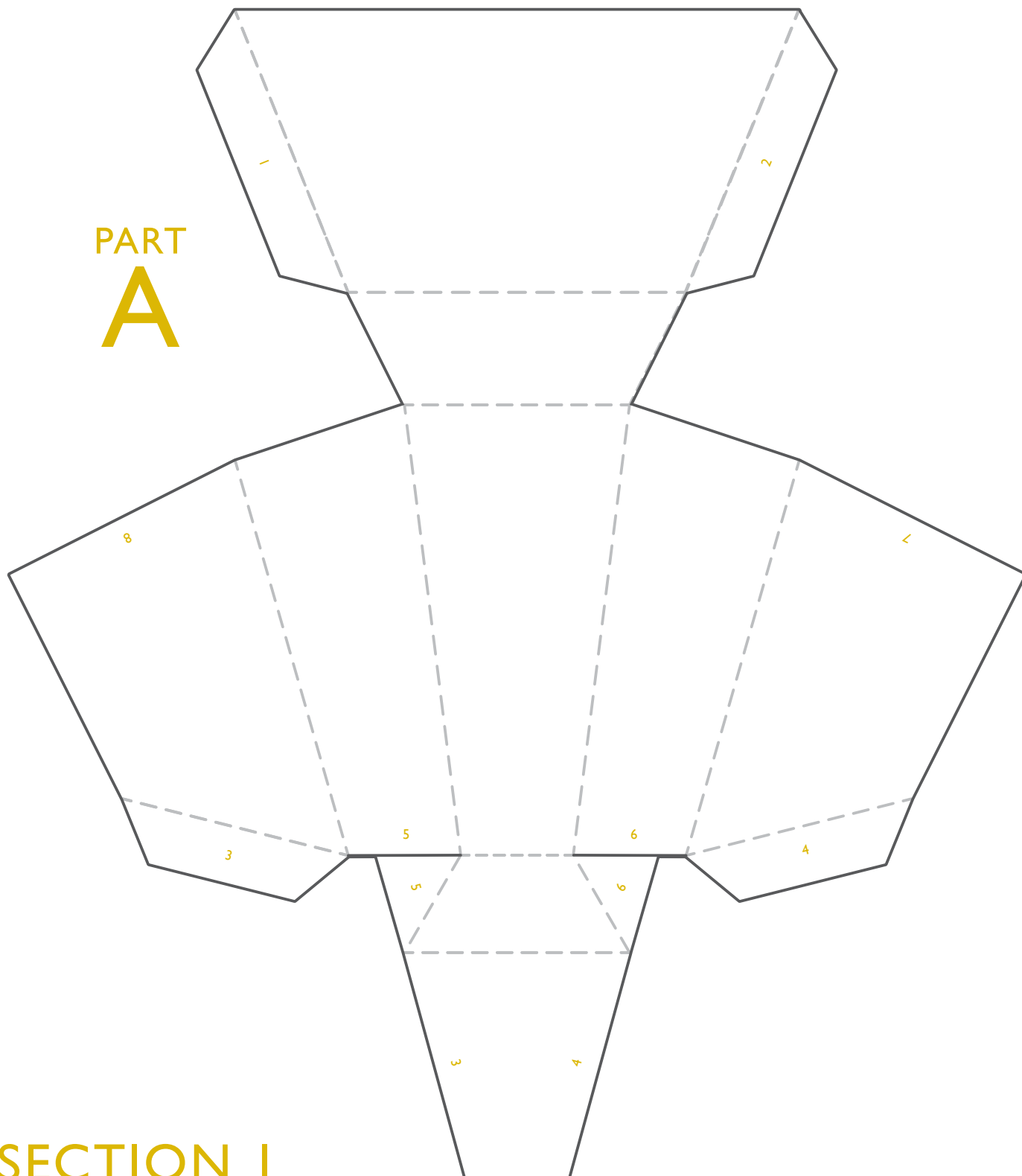
BUILD
YOUR OWN

BEAR

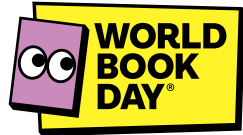
MASK



PART
A



SECTION I
PRINTER VERSION



BUILD
YOUR OWN

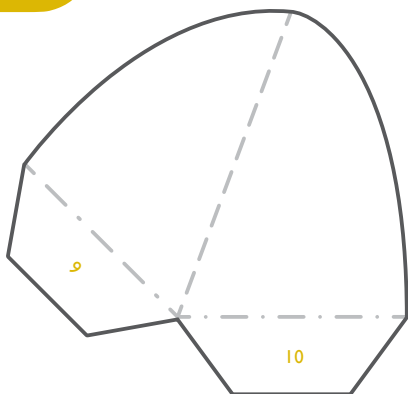
HANNAH GOLD

BEAR

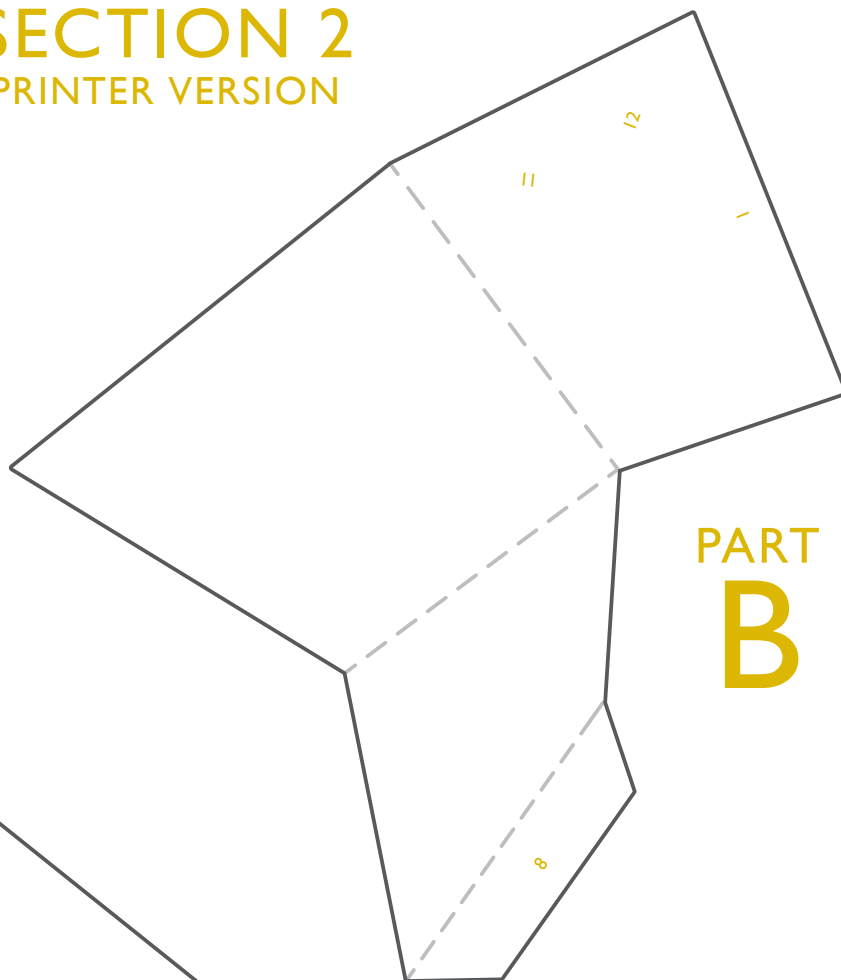
MASK



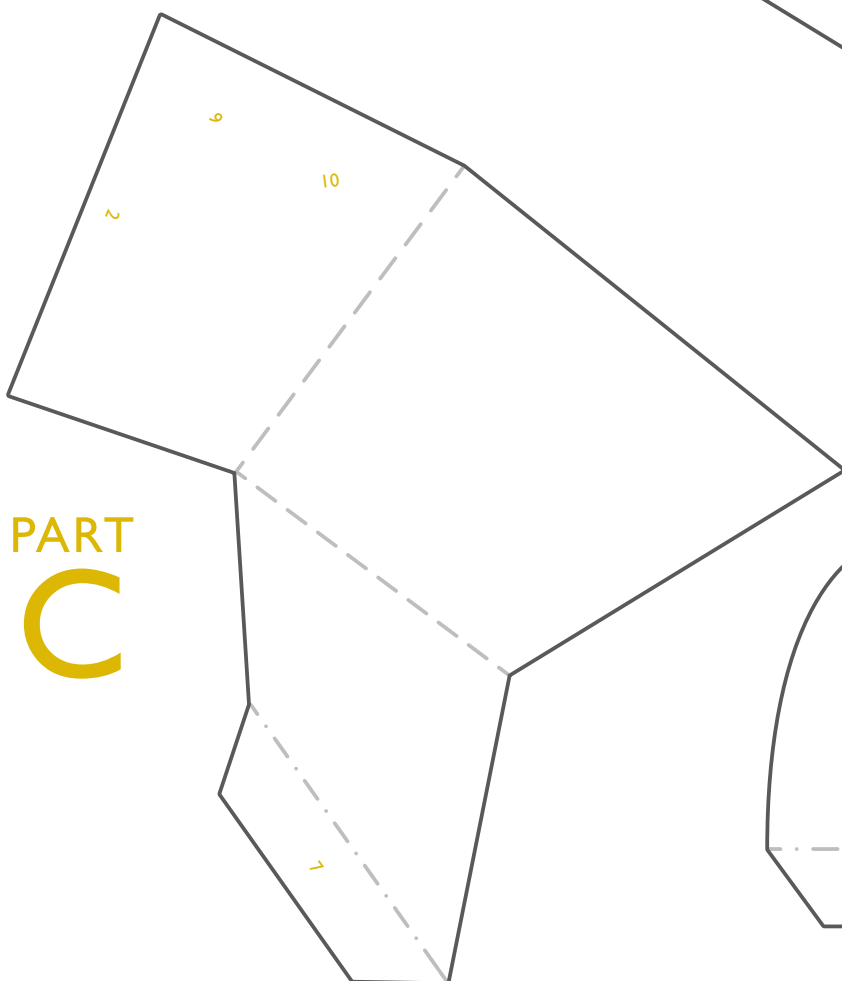
PART
D



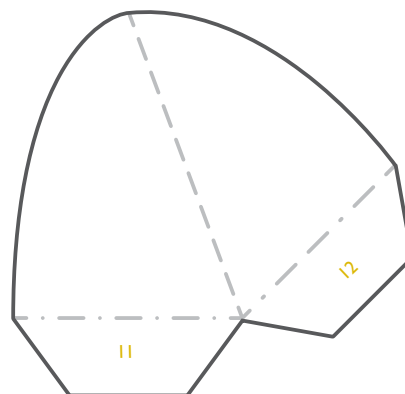
SECTION 2
PRINTER VERSION



PART
B



PART
C



PART
E

BUILD YOUR OWN

BEAR

MASK

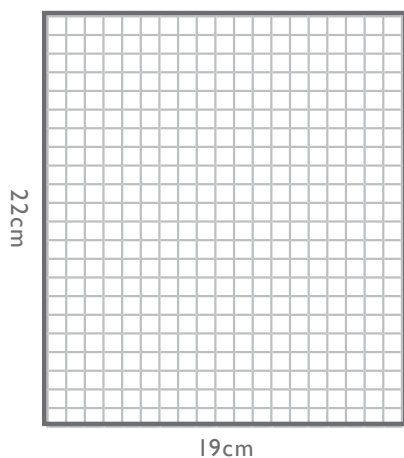


CREATE YOUR OWN ANIMAL MASK TEMPLATE



YOU WILL NEED

- A cereal box or sheets of thick paper
- A pair of safety scissors
- A pencil
- A ruler
- Glue or sticky tap
- String (if you have some)



This line shows
a Mountain fold
(folds towards you)



This line shows a Valley fold
(folds away from you)

DIGITAL VERSION
ONLY INSTRUCTIONS

DRAWING THE TEMPLATE

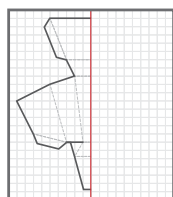
- 1) Take your cardboard or piece of paper and measure out a grid with 22 lines down and 19 lines across. Measure each line to be a distance of 1cm apart.
- 2) Following the diagram on the next pages on screen, count how many lines separate each point of the mask's shapes and make a dot. When you have marked out two dots, join them with a line using a ruler.
- 3) Once you have the outlines in place, use your ruler again to draw in all of the fold lines.

BUILDING INSTRUCTIONS

- 1) Ask an adult to help you carefully cut out parts A / B / C / D / E along the solid dark grey line.
- 2) Fold along all of the light grey dashed lines in the direction indicated in the diagram below.
- 3) Find all of the small numbers on the tabs and edges of the individual parts of the mask.
- 4) Apply glue to the tabs and press firmly underneath the matching number, making sure the edges are aligned.
- 5) Fold parts D and E and stick to the top of the mask to make the ears.
- 6) Once your mask is complete, you could cut a band of cardboard from your cereal packet to fit around the back of your head and glue to the sides of the mask or attach a length of string or ribbon.

DECORATING TEMPLATE

- 1) If you want to draw, colour or paint your mask, it will be easier to do whilst the mask is flat.



CAN YOU CREATE YOUR OWN ANIMAL MASK?

Try placing the ears on top of the mask to turn the Bear into the Husky – or even try to create your own animal mask using the blank grid
(HINT: you can design one half of the mask first to see if all of the pieces fit, then copy the design onto the second half of the grid).

DISCOVER MORE FROM
HANNAH
GOLD

